

The Entire Deck of 78 Tarot Cards

Waite Deck

Downloaded from www.thegroovygroup.org

- **MAJOR ARCANA - 22 cards in all.**



Card 01 - The Fool. The Meaning: Exact Card. *At this time, you are out of synchronisation with the rest of the world. However, in a positive way. You may want to go out on your own, “Full speed ahead” and damn the torpedoes.” On the other hand, you may feel isolated from the group, a loner. Your experience of the current situation is different from those around you. You feel as if you are marching to different drummer, and you probably are. Listen to that drummer, for this is the beat of your authentic self, trying to get your attention.*



Card 02 - The Magician. The Meaning: Exact Card. *This signifies a new beginning and new choices. It indicates someone who is willing and able to manipulate the situation to achieve the desired ends. It suggests leadership potential, ambition, desire for action, and new relationships coming into being. The tools for whatever you desire is already at hand, as is the knowledge for using them correctly, evaluate them and use them properly.*



Card 03 - The High Priestess. The Meaning: Exact Card. *You are experiencing awareness of the invisible world, where inner change takes place before manifests in the outer, material world. Your attunement to these inner, invisible sources is acute now, your sources are acute now, and you are in position to take advantage of this. You may want to remove yourself, literally, from your day-to-day life to go deeper into inner core. Tune in to your inner voice and spiritual awareness.*



THE EMPRESS. **Card 04 - The Empress. The Meaning: Exact Card.** *You are in a position of nurturing someone else, or several others. You should be caring for children or the sick, or being supportive of a spouse or friend in need. This card could also refer to pregnancy. It is appropriate for you to be nurturing now, for you have the inner strength and the ability to do without depleting yourself.*



THE EMPEROR. **Card 05 - The Emperor. The Meaning: Exact Card.** *This indicates that you are involved with the established order, or with someone who represents the establishment. You may have a need to identify with a powerful group, religious, ideological, intellectual, economic, or political and to be one of them. Alternatively, you may be associating with someone else who has this need.*



THE HIEROPHANT. **Card 06 - The Hierophant. The Meaning: Exact Card.** *An authority is active in your life, whether it is religion, a philosophy, a social organisation, or other group. You feel a great deal of loyalty to this tradition or group and choose to live in accordance with the beliefs you share with it. You may aspire to become a leader. There may also be judgemental quality involved. Sometimes this card challenges or limitations of spiritual nature.*



THE LOVERS. **Card 07 - The Lovers. The Meaning: Exact Card.** *This is a card of cooperation, of working together with others to accomplish joint purposes. It stands for attraction of any kind, not only the romantic variety, and for any venture requiring harmony, union, and cooperation. A choice between two factors of equal worth may be required, but the choice may have come together in your life in pursuit of a common goal. This may be temporary conjunction for some specific purpose or it might be long-term relationship.*



Card 08 - The Chariot. The Meaning: Exact Card. *Victory is assured! Things are moving fast. In this situation you are completely, totally involved, and happily so. Whatever task is at hand can be accomplished. Though the pace is faster than usual, you are attuned to the rhythm of it and the changes that is happening at your job, in a relationship, or in some community or worldly involvement. By uniting the yin and yang sides of your personality, you keep things going in the right direction.*



Card 09 - Strength. The Meaning: Exact Card. *You have come through severe trials and triumphed. You have found your deep inner strength, and it will see you through whatever comes your way. You are firmly connected to the instinctual world (represented by the lion), able to make friends with it and control it. Your positive connection to your animal self will protect and care for you. Your inner drives nature supports all that you do or hope to do. At this time, logical analysis, if it is conflict with your intuition, is not as important as what you feel to be right for you.*



Card 10 - The Hermit. The Meaning: Exact Card. *the Hermit waits patiently for you to turn to him for advice. You may be aware of his influence, but are ignoring it. At this time, you might be looking for guidance from the invisible world. You may be isolating yourself in some way, seeking solitude, wisdom, and inner peace. You want to gain perspective on you life, and you are open to inner guidance that is available to you.*



Card 11 - The Wheel of Fortune. The Meaning: Exact Card: *You have done something, quit a job, made travel reservations, begun or ended a relationship, or opted out of a friendship or other situation. Destiny has been set in motion, and all will turn out as intended. There is very little*

more you have to do except to go with the flow. There may be unexpected turns of events, but they, too, are part of the grand plan of life. This card is precursor of good fortune.



Card 12 - Justice. The Meaning: Exact Card. You are concerned with external circumstances, waiting for the right time to act. You may be seeking justice in personal or business affairs, or you may be involved with a lawsuit.

In any case, it is important to resolve the situation in a way that is fair to all participants. You must create a balance, not only of power but also in terms of your emotional reactions to the situation. This is time for moderation in all things, for creating harmony to facilitate relationships. You may be called upon to arbitrate for others, or may be subject to arbitration yourself. Your judgements are good at this time, and are never swayed by personal considerations or bias.



Card 13 - The Hanged Man. The Meaning: Exact Card. This card indicates a need to develop the inner self. You might need to re-evaluate what is not important to you. It may be difficult to let go of old patterns, or relationship a job, a worldview, a lifestyle but letting go is essential to your continued growth.

The Hangman relates to all the dying and resurrected gods of mythology. You are suspended between the past and the future; a new direction for your life is in the making. Look at things from a different perspective and make necessary readjustments. Readjustments are needed, but the good news is there is no hurry. Take your time and make the right decisions about where you truly want to take your life. Pay attention in your inner development and be prepared to dance to a different drummer in the future.

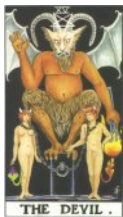


Card 14 - Death. The Meaning: Exact Card. Contrary to the grim illustration, the Death card indicates a transformation for the better. It does not portend actual physical death. Usually, the person is experiencing a metamorphosis of some sort. Patterns you once found workable are no

longer effective. The old ways must be destroyed to make room for the new that is coming into being.



Card 15 - Temperance. The Meaning: Exact Card. You are being asked to blend things in a harmonious way. You are leaning to temper your ego needs with the legitimate needs of the spirit within. This is a time of inner growth and outer harmony. With patience, you can unite the disparate elements, whether they are raw materials, resources, personnel, or ideas into a harmonious whole.



Card 16 - The Devil. The Meaning: Exact Card. This card represents the bondage that we create and maintain for ourselves. There may be obstacles in the environment that you find frustrating, or you may feel your options are narrowing. Someone else may be involved, but you have the ability to free yourself from the situation by using your willpower.



Card 17 - The Tower. The Meaning: Exact Card. Whatever disruption or adversity The Tower heralds are for the best. The Tower represents overthrowing false ideas and old habit patterns. In this sense, it is not a negative card but a positive one. There may be some kind of loss personally or financial, but the catastrophic event could have been foreseen if you had been aware and willing to face facts. What is destroyed in conjunction with this card has served its purpose and needs to go.



Card 18 - The Star. The Meaning: Exact Card. At this time, you are experiencing optimism and self-confidence. You feel good about yourself and place in the universe. You have arrived at a positive place, for which you have been preparing yourself. You are receiving assistance from both the invisible world as well as the material world. Good things are in the offing. Money, possessions, love, recognition or assistance because you are flowing

with the energy of the universe. You trust life's processes and setting new goals for the future. New opportunities in your career or relationships are opening.



Card 19 - The Moon. The Meaning: Exact Card. *When the moon appears in a reading, it suggests that you pay more attention to your inner self, your lunar self. In its diffuse light, you can often see more clearly than in the glare of the noonday sun. The light of the sun enables you to see the world around you, but the moon illuminates what springs naturally from inside you. Pay attention to your dreams, feelings, instincts, and intuition. The Moon can also indicate deceit and self-deception; conditions are usually a result of ignoring your own inner prompting. If you are “taken” especially emotionally, it is because you let your rational mind override your feelings. Also tying up loose ends connected with the past, especially to your mother or other females. The Moon is the symbol for the Goddess, whose three aspects are depicted in the moon's phases. As the newborn crescent, the moon is the maiden, - not chaste, but belongs to her alone, not bound to any man. At the full moon, she is the mature woman, sexually and maternal, giver of life. At the end of his cycle, the waning moon represents the crone whose years have ripened into wisdom.*



Card 20 - The Sun. The Meaning: Exact Card. *Generally considered a positive card; The Sun indicates vitality, confidence, success, and good times. It signifies a time of new beginnings, of things going well, of accomplishment, success, and contentment. You feel cheerful and self-confident, full of life and energy, ready to undertake new projects with enthusiasm. You may be starting more than one project, or upgrading something in your life, such as taking a more satisfying job, remodelling your home, or moving to a sunnier climate.*



Card 21 - Judgement. The Meaning: Exact Card. *You have had a wake-up call from the universe and now ready to step into a new phase of your maturing process. Your life is fairly settled now, and you are letting things grow at a steady pace, without hurrying the process. A new phase in your life is coming into being as the natural result of your maturity, like a*

tree that has gone through the flowering stage bears fruit as the product of its maturity. You may get important news that will bring you joy and a sense of fulfilment. Health improves, and problems are easily solved.



Card 22 - The World. The Meaning: Exact Card. At this time, you are out of synchronisation with the rest of the world. However, in a positive way. You may want to go out on your own, “Full speed ahead” and damn the torpedoes.” On the other hand, you may feel isolated from the group, a loner. Your experience of the current situation is different from those around you. You feel as if you are marching to different drummer, and you probably are. Listen to that drummer, for this is the beat of your authentic self, trying to get your attention.

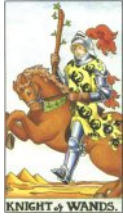
- **MINOR ARCANA - 56 cards in all.**



Card 23 - King of Wands. The Meaning: Exact Card. Represents a man of status and wealth, an influential and independent person who helps those he cares about. He may be a boss, mentor, senior business partner, or adviser. You may rely on his honesty, intelligence, loyalty, and fair-mindedness and you are sure to get good advice off him. If the king does not represent any actual person in your life, he can refer to a situation, which is exactly as it appears to be with no hint of deception. This card can indicate that good fortune is coming your way, perhaps in the form of unexpected help or advise good news, promotion, or an inheritance.



Card 24 - Queen of Wands. The Meaning: Exact Card. Socially prominent, this queen represents a woman who is in a position of authority and shines in her endeavours. A “lioness” that is warm, generous, and loving. She is honourable, creative, intelligent, friendly, and mature. Her advice is well worth taking, and she will be a loyal confidante or provide valuable assistance. A natural leader, she may be the head of a business, social, or philanthropic organization, or a political figure. If the queen does not represent an actual person, she indicates that now is a good time for you to move forward in a business or creative venture. If the queen represents you, you have the qualities within yourself that you need to succeed.



Card 25 - Knight of Wands. The Meaning: Exact Card.

Knights are messengers and travellers, and the Knight of Wands brings good news concerning work or social activities. His glad tidings may relate to almost any anticipated happy event, or a journey or vacation, a change of residence or job, an engagement or marriage. If this card represents a specific person, it refers to a young man who is a relative or friend with the same qualities as the King and Queen, who are his parents in the royal family. This person bearing the message can be trusted and is faithful.



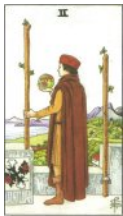
Card 26 - Page of Wands. The Meaning: Exact Card.

The Page of Wands represents a message of importance to your current project or situation, usually affecting work although it may be of a social nature. The information is positive. If the card represents a person in your life, it could be a younger relative or friend, an apprentice, student, or assistant. This Page is an enthusiastic adventurer and may be interested in international travel, foreign cultures and people, the arts, or philosophic projects.



Card 27 - Ace of Wands. The Meaning: Exact Card.

This indicates the beginning of an enterprise, usually involving business, the arts, or finance. It shows that you have planted the seeds for a new birth, possibly a creative or moneymaking idea. You are free from restraints that have hampered you in the past, able to express yourself successfully, take on a new role or forge a new identity through your work.



Card 28 - II of Wands. The Meaning: Exact Card. *You are saying "Yes" to a new enterprise with the expectation that you will achieve ownership, wealth, and good fortune. You have started something and are awaiting results. You may, however, have to deal with some unforeseen problems or encounter unexpected obstacles and opposition, such as a bank loan not coming through, a partner defending, or of support, you were counting on. Sometimes this card indicates a need to alter your course.*



Card 29 - III of Wands. The Meaning: Exact Card. *You are consolidated your situation, business, or enterprise and now can expect financial and/or personal gain. By clearly defining the role you want to play, you present a positive picture to the world. This confident attitude may draw helpful people towards you or attract beneficial circumstances. You have established a solid foundation for your business or occupation and can cooperation from other. At this point, you are clear about whom you are and what you intend to achieve. Others will respond positively to you.*



Card 30 - IV of Wands. The Meaning: Exact Card. *You are enjoying pleasure and prosperity, reaping the rewards you have earned. Your finances are in good shape, and you are in harmony with your environment and the people in it. You have shown the world that you truly are and what you can achieve. It is time for celebration and good times.*



Card 31 - V of Wands. The Meaning: Exact Card. *New factors moving into the situation demand that you change, adapt, and grow. Life is not as simple as it was. New competition has moved into the neighbourhood, or the industry, and you have to put forth more effort to keep what you have gained. Depending on the rest of the reading and how you handle the challenges facing you, you could either suffer hardship and loss or go to greater success and prosperity.*



Card 32 - VI of Wands. The Meaning: Exact Card. *Victory is at hand. You have overcome or conquered the opposition. Past self-doubt has been resolved, and you are in the process of winning some significant battles. You can expect to succeed and have your desires gratified. Gifts may be received, awards and recognition won.*



Card 33 - VII of Wands. The Meaning: Exact Card. *Willing to fight for what he believes in and will stand your ground. Previously you might have fallen into complacency but you now are ready to face challenges. Profit and gain come only after you have firmly held off your competition or enemies. You may be outnumbered but determination will win the day. You are discovering inner recourses you hardly suspected you had and using them to overcome obstacles. Thus, you have the advantage and will eventually success by sheer force of will and personality.*



Card 34 - VIII of Wands. The Meaning: Exact Card. *You have shot your arrows into the air, and they are speeding toward the target. Now is a time for action, for initiating the next phase of your enterprise. This may involve air travel or other movements. It is an exciting and hopeful period, when you are likely to be busy. Positive things are rapidly unfolding. Establish the role you want to play and let go of those that no longer suit you.*



Card 35 - IX of Wands. The Meaning: Exact Card. *Nines represent completion, and the Nine of Wands in a reading indicates that the job is done. You have had the discipline and the ability to plan well and wisely. Your relationships are developing positively, and you are moving forward with a sense of purpose and direction. If there is still opposition, your skills, strength, and courage will prevail over all opponents.*



Card 36 - X of Wands. The Meaning: Exact Card. *Your labour may have gone for naught, or you may be carrying burdens that really do not belong to you. You feel weary, as if the whole world is on your shoulders. It is up to you to decide whether to continue carrying the heavy responsibilities you have undertaken or if other people are shirking their part and should help out. Sometimes, one member of a family or*

organization gets all the dirty work for the simple reason that they are willing to do it. Make sure others are doing their fair share. Ask for help if you need it; do not let pride stand in your way.



Card 37 - King of Pentacles. The Meaning: Exact Card. *The King represents a mature man who is not only wealthy but also courageous. A solid citizen, he is reputable, dependable, and kind to others. He symbolizes worldly power in a positive sense and is experienced in handling money matters. He can provide reliable counsel on matters of money, property, and security. He may also be a man who is cultured and refined, perhaps someone who serves as a patron. If the King represents an actual person, he is likely to be well disposed toward the querent; possibly, he is a corporate head where the person works, or a banker from whom the querent is soliciting a loan. If the King is not an actual person, then his appearance indicates that the querent is engaged in some worldly enterprise that will meet with success.*



Card 38 - Queen of Pentacles. The Meaning: Exact Card. *The Queen represents a generous woman who is also an excellent manager in practical and financial areas. She may be a sensual woman who is at home in her body and enjoy her creative comforts. As an adviser, she favours the querent or will at least be fair. She is pragmatic and realistic and wants to see that the money she distributes produces tangible results. If the card does not represent a person, it shows a harvest after much labour, security, and prudent use of resources.*

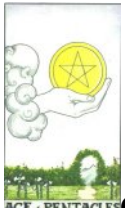


Card 39 - Knight of Pentacles. The Meaning: Exact Card. *If this Knight represents a person, he is someone with the spirit of adventure, however, who is practical and materially minded. He is good at performing any task set for him, but not likely to be a self-starter. If the card does not signify a person, it suggests a situation involving arrivals and/or departures. You may quit a job for a more lucrative one elsewhere, move to another locale for financial or work-related reasons, or experience other changes in your life relative to money, possessions, or security.*



PAGE 9 PENTACLES

Card 40 - Page of Pentacles. The Meaning: Exact Card. *The Page of Pentacles indicates good news regarding the acquisition of money or material goods. His appearance suggests someone who is intelligent, refined, sensitive to the arts, and appreciative of the good life. Ambitious and determined, he is goal-oriented. If he does not represent a person, this card indicates your worldly ambitions and/or a message concerning them.*

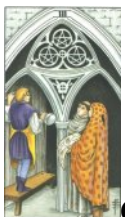


ACE 9 PENTACLES

Card 41 - Ace of Pentacles. The Meaning: Exact Card. *The Ace is extremely positive, predicting success for some new enterprise you are starting. You are planting the seeds for the new venture involving the acquisition of money or financial security. The Ace is a strong indication of prosperity coming to you. Be open to receive the benefits it promises.*



Card 42 - II of Pentacles. The Meaning: Exact Card. *A message about money could be on its way to you, probably in written form. You are still in the stage of deciding which of two different options to choose. Perhaps you are concerned about financial issues and may be holding down more than one job, or moonlighting to make extra money. It is time to make a choice and with it even if you are not sure of the outcome.*



Card 43 - III of Pentacles. The Meaning: Exact Card. *You are acquiring marketable skills, preparing yourself for action in the world. Perhaps you are a recent graduate or have returned to school to upgrade your skills or change your career. You are enterprising and may be interested in commerce, or a specific trade or business. You anticipate a rise in prestige and earnings. This card can also indicate a payback period when you demonstrate your abilities and begin to reap the rewards of your efforts. Alternatively, you could receive money that is owed to you.*



Card 44 - IV of Pentacles. The Meaning: Exact Card. *You are hanging on to something, either your possessions or a situation, in a stubborn and inflexible manner. Fear of change may be involved, or you may merely be comfortable where you are. Your fixed attitude, however, may be limiting you and blocking new opportunities for success and happiness.*



Card 45 - V of Pentacles. The Meaning: Exact Card. *This five is a warning that money may soon be very tight, that losses may ensue from ill-advised investments, or that support you had counted on will not be forthcoming, such as a grant, legacy, or job. In some cases, it advises you to ask for help from other people or the universe.*



Card 46 - VI of Pentacles. The Meaning: Exact Card. *Good things are coming to you and going out from you, in material terms. You are experiencing abundance, prosperity, and personal gratification. You may be in a position to support a good cause, perhaps be contributing financially to people who are struggling upward. This card can also represent philanthropic projects or providing work for other people.*



Card 47- VII of Pentacles. The Meaning: Exact Card. *You have put in the time and effort and paid your dues. Now you will gain in business or other enterprises. Not only that, but you feel great satisfaction from a job well done. Growth and good fortune are yours, well earned.*



Card 48 - VIII of Pentacles. The Meaning: Exact Card. *You are integrating old skills into a new form, or you are adding new skills. You have tried various means of making your living, and are now finalising how you want to use your personal resources. To accomplish your needs and expand. Your sureness of purpose guaranteed success. Your quality will be rewarded be increased by increased income, opportunity, and respect.*



Card 49 - IX of Pentacles. The Meaning: Exact Card. *You have integrated the factors of your life into a secure base. Now you are enjoying money, resources, and physical energy as a smooth combined flow. There is plenty all around you, materials well-being, order, safety, and success.*



Card 50 - X of Pentacles. The Meaning: Exact Card. *You are emphasising home and family at this point, now that you have a secure income to support them. You may be planning to build a new home, or buy a second vacation home. Family matters are at the forefront, and you have the leisure to concentrate on personal affairs. In some cases, this card can represent marrying into money or receiving an inheritance.*



Card 51 - King of Swords. The Meaning: Exact Card. *This represents a man of great strength and authority. If he stands for a person, he is involved with mental work, such as researcher, a lawyer, teacher, someone in the communications field, or a military officer. He is a good counsellor with acute mental dexterity. He has a gift for thinking clearly and rapidly, and he is able to express his thoughts with considerable eloquence. If this King is not a person, he represents a situation in which mental and communication skills are called for. When he appears, you may be on the verge of a spiritual breakthrough and are ready to communicate it.*



QUEEN of SWORDS

Card 52 - Queen of Swords. The Meaning: Exact Card. *When the Queen of Swords appears in a reading, she represents a single or independent woman with authority and power. Often she is someone with keen intellectual or communicative abilities. A Writer, professor, lawyer, minister, businesswoman, or scholar. In some instances, this card may indicate someone who has endured emotional loss and separation, perhaps as a result of a divorce or death. If she describes a person, she is strong-willed and has the ability to cope with her loss and go on with her life. If she does not represent a person, this Queen can indicate that the querent is going through a difficult experience, which will open new vistas for positive growth. This is true if an Ace appears in the reading too.*



KNIGHT of SWORDS

Card 53 - Knight of Swords. The Meaning: Exact Card. *As a messenger, the Knight of Swords may bring bad news that relates to personally or to someone close to you. Some kind of conflict is at hand, usually of a mental nature. There could be violent differences of opinion around you, with angry messages being sent and received. If this Knight is not a person, you may be focused on your intellectual pursuits that you are neglecting other facets of your life. You may be expressing your ideas to forcefully and antagonizing the opposition. Diplomacy may be called for.*



PAGE of SWORDS

Card 54 - Page of Swords. The Meaning: Exact Card. *As a messenger, this page brings news of problems and difficulties, perhaps relating to a young person you know. An offspring may have failed college exams or be in trouble with the law. An element of experimentation is indicated here; either you or someone else is taking a risk or behaving in a risky manner that might cause problems. The Page is motivated by unconventional activity, which can cause strife. Overconfidence might also get this person into trouble.*



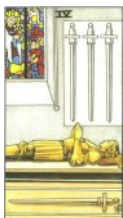
Card 55 - Ace of Swords. The Meaning: Exact Card. *A Brand new lifestyle is beginning. You have achieved this opportunity through willpower and using your mental faculties. Prosperity recognises spiritual growth. Make sure to follow in the wake of your new direction in life. This Ace signals a birth, usually of an idea or enterprise. You now are in position to manifest your philosophy in a new way.*



Card 56 - II of Swords. The Meaning: Exact Card. *This card indicates stasis. You may be maintaining the situation by putting up a façade and ignoring the underlying tension that exists. This is an uncomfortable position to be in, but you are not ready to do anything about it yet. You need to speak up and communicate clearly. Eventually, however, change must take place. You have choices. Remove the blindfold and look honestly at the situation.*



Card 57- III of Swords. The Meaning: Exact Card. *You are feeling the pain of separation, possible in the area of love. Sometimes this card can signify a love triangle. A third party has entered into the formally stable situation and caused the break-up, but it was ready to happen anyway. It is time to let go. Whatever has died must be allowed to disintegrate within your psychic structure. Do not try to hold on to the past.*



Card 58 - IV of Swords. The Meaning: Exact Card. *After a painful time you are in the first stage of recovery, whether from emotional upheaval or physical illness. You are resting through and plan your next moves wisely. You may want to retreat from other people and the world while you get you inner business sorted out.*



Card 59 - V of Swords. The Meaning: Exact Card. *Change is a part of life, and the more you resist it, the more difficult you make things for yourself. Whatever needs to be changed, your lifestyle, your philosophy, and your inner beliefs about yourself. Now is a good time to get to work.*



Card 60 - VI of Swords. The Meaning: Exact Card. *This is the time of integration or reintegration. Harmony and ease prevail. New people you can trust come into your life. After some intense suffering, you now feel optimistic and balanced. This card can also indicate a move or a journey over water. The destination may be unknown, or the effects of the move may be uncertain, but luck is on your side, and any change you make will go smoothly.*



Card 61 - VII of Swords. The Meaning: Exact Card. *When this card in on the spread, this indicates, it urges caution in all dealings. Surreptitious action or indirect communications may be occurring. Nothing is quite what it seems to be, and you have to use your wit to achieve your aims. Be wary of overconfidence. You may appear to be top now, but imprudence could do you in. However, you have the upper hand over a tricky situation, but you still need to exercise caution. Discretion and discrimination are required, as are diplomacy and evasive tactics. You may not enjoy this oblique approach, but you will be more likely to achieve success this way.*



Card 62 - VIII of Swords. The Meaning: Exact Card. *Most writers view this as an extremely negative card. In the Waite deck, bound and blindfolded woman is surrounded by eight swords stuck into the sand around her, like a barrier. The card describes a situation that causes great unhappiness, but you can change matters. The bad situation is temporary, and if the card falls in the “future” position, the problem can even be avoided.*



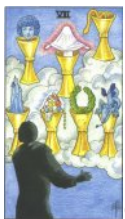
Card 63 - IX of Swords. The Meaning: Exact Card. *The Nine of Swords indicates that you are troubled by bad dreams or horrible fantasies. Deep-rooted or repressed issues are trying to surface so you can resolve them. Mental tortures may result as circumstances force you to change your attitudes and beliefs. This is not all bad, however, no matter how painful it seems. Nine is the number of completion; thus, this card indicates that the changes are being required to make forecast a better future.*



Card 64 - X of Swords. The Meaning: Exact Card. *When The Ten of Swords appears, it suggests that you need to make a clean break from the past and its attendant pain and suffering. Whether this means a divorce, quitting a job, moving across the country, or changing a belief system, make the break cleanly, leaving no loose ends. Do away with previous illusions that have clouded your vision.*

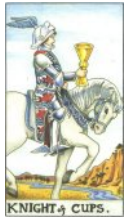


Card 65 - King of Cups. The Meaning: Exact Card. *This card indicates a man who is a kindly disposed a benevolent father figure, who may represent your own father or someone who fills that role for you. He can also signify an older man with whom you either have or want a love relationship. Whether as a friend, adviser, or lover, he is utterly trustworthy and independent, and can be relied upon to come through for you when you need him. Most interpretations consider this King to be a man of culture, interesting and the arts, possibly himself a creative type. If the King does not represent an actual person, he indicates a situation that is favourable, especially if it is an artistic pursuit.*



Card 66 - Queen of Cups. The Meaning: Exact Card. *This can represent any kindly woman in your life. She is creative, perhaps an artist with visionary tendencies. Her psychic ability is highly developed and tends to be accurate. However, she represents the querent herself, above all*

qualities apply although they may still be undeveloped. If the queen does not represent a person, the situation she describes may concern a creative endeavour, relationships, or circumstances with a positive emotional tone.



Card 67 - Knight of Cups. The Meaning: Exact Card. *The Knight of Cups is bringing you a message about love, the knight on the scent of true love, the knight rides on a white horse! His appearance indicates you are deeply involved in an emotional situation, to the point where little else matters. You may be awaiting this message, such as a declaration of love or a proposal of marriage, with such anticipation that everything else seems insignificant. If the Knight does not represent a lover, he is certainly a friend, honest, intelligent, and willing to aid you.*



Card 68 - Page of Cups. The Meaning: Exact Card. *This signifies a young person, male or female, possibly a son, daughter, or a younger sibling who is bringing you a message about love. It might mean an engagement or a wedding, some situation that holds an inherent emotional risk. The circumstances may be exciting yet scary at the same time, as with a sudden elopement.*

Often the Page suggests naiveté or vulnerability, especially in matters of the heart. If the card represents the querent, it says you have to give it your all and feel things work out.



Card 69 - Ace of Cups. The Meaning: Exact Card. *Indicates a new beginning, a new love or a one on one relationship of any kind. Previously unmet emotions come into play now, perhaps because of seeing a relationship in a new way. This Ace can also herald a birth of a child or an idea. This is fertile time for emotional or creative growth, as this Ace symbolises the consummation of something you are hoping for.*



Card 70 - II of Cups. The Meaning: Exact Card. *You are moving in tandem with another person now, and all is going smoothly. Whether it is a romantic relationship or a friendship, you feel accord, mutual admiration, and good will towards each other. Ordinarily, this card refers to a love match between the sexes, but it can also indicate a partnership of another sort.*



Card 71 - III of Cups. The Meaning: Exact Card. *You are experiencing success and plenty, a time of merriment and celebration is at hand. Your feelings are clear now, and you understand your emotional patterns in a positive, growth-producing way. You are on your way to great things.*



Card 72 - IV of Cups. The Meaning: Exact Card. *this card represents a state of apathy and withdrawal. However, this may be a necessary rest after the hectic excitement represented by the Three. It is a time to get away by yourself and just drift and dream for a while before returning into your daily grind. You are withdrawing your emotions from situations or a person. After intense emotional involvement, you may need some space for yourself. There's a feeling of let-down after a build-up, as in the postpartum blues or when you have to deal with all the nitty-gritty's making a marriage work.*



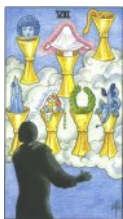
Card 73 - V of Cups. The Meaning: Exact Card. *Brooding over past wrongs, losses, disappointments, or hurts you are dwelling on painful past and refusing to look forward to a positive future.*

Your unhappiness is a result of your attitude, which you can change. This is a card of choice. You can continue to brood over what went wrong, or you can

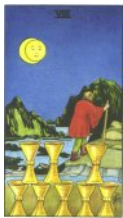
contemplate how things can be better in the future. You do not have to be miserable.



Card 74 - VI of Cups. The Meaning: Exact Card. *You are experiencing emotions connected to your past that will shed light on your future. You are feeling calm and collected about past events, putting them into perspective, and beginning to understand how they can bring future renewal.*



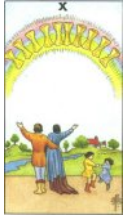
Card 75 - VII of Cups. The Meaning: Exact Card. *This card signifies a time of great creative potential, along with the energy to make use of it. Many options are available: the difficult is in choosing the right one. This card represents fantasy and imagination. You are looking at a number of possibilities now, too many to make an easy choice. With so many options, you are exploring different roles in your imagination but deciding which to manifest is a challenge.*



Card 76 - VIII of Cups. The Meaning: Exact Card. *The only solution seems to be to turn your back on a situation and go in another direction. What is there is not working as expected or is not important anymore. You know what you want and will not settle for anything less.*



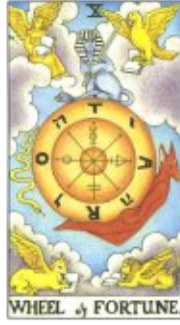
Card 77 - IX of Cups. The Meaning: Exact Card. *This card means success, triumph, everything you want and hope for. When the Nine of Cups appears, make a wish. Ask yourself, "What do I really want?" The card responds and will get it.*

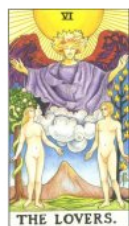
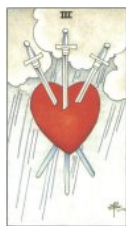


Card 78- X of Cups. The Meaning: Exact Card. *This card is an indication of everything that most people wish for, love and harmony, a happy family life, true love and companionship. It signifies a time of completion, of reaping what you have sown. It symbolizes abundance in a larger sense.*

Tarot Spreads



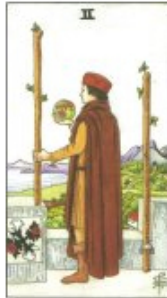




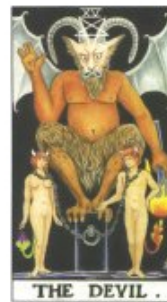




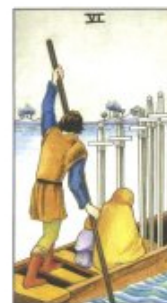
KNIGHT OF PENTACLES



THE EMPEROR.



THE DEVIL .



THE HIGH PRIESTESS



THE FOOL .



THE HIEROPHANT



QUEEN of SWORDS.



KING of SWORDS.



THE FOOL.



KNIGHT of CUPS.



ACE of PENTACLES.



PAGE of WANDS.



VI



PAGE of SWORDS.



PAGE of CUPS.



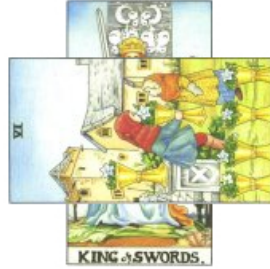
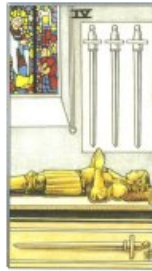
KNIGHT of PENTACLES.



QUEEN of SWORDS.



IX





KNIGHT of WANDS.



THE MOON.



KING of SWORDS.



THE TOWER.



PAGE of CUPS.



II



THE WORLD.